

## 11-4039: Polyclonal Antibody to SpiB

<b>Clonality :</b>	Polyclonal
<b>Application :</b>	WB
<b>Reactivity :</b>	Human
<b>Gene :</b>	SPIB
<b>Gene ID :</b>	6689
<b>Uniprot ID :</b>	Q01892
<b>Format :</b>	Purified
<b>Alternative Name :</b>	SPIB
<b>Isotype :</b>	Rabbit IgG

**Immunogen Information :** Full length recombinant SpiB protein was used as the immunogen for this antibody.

### Description

Spi-B belongs to the ETS family transcription factor containing a conserved ETS domain which specifically binds to a purine-rich DNA sequence called the PU-box (5'-GAGGAA-3'). Spi-B has two known isoforms (28 and 18 kDa) and is localized in nucleus and cytoplasm. Spi-B contains two transactivation domains (TAD) at the N-terminal end which may be required for transcriptional activation of the target genes. Spi-B is involved in development of plasmacytoid dendritic cells (natural interferon producing cells) and B-cell development. Spi-B acts as a lymphoid specific enhancer. Spi-B is highly expressed in plasmacytoid dendritic cells (pDCs), B-cells and stem cell populations of the liver.

### Product Info

<b>Amount :</b>	25 µg / 100 µg
<b>Purification :</b>	Protein A Chromatography
<b>Content :</b>	25 µg in 50 µl/100 µg in 200 µl PBS containing 0.05% BSA and 0.05% sodium azide. Sodium azide is highly toxic.
<b>Storage condition :</b>	Store the antibody at 4°C, stable for 6 months. For long-term storage, store at -20°C. Avoid repeated freeze and thaw cycles.

### Application Note

Western blot analysis: 2-4 µg/ml

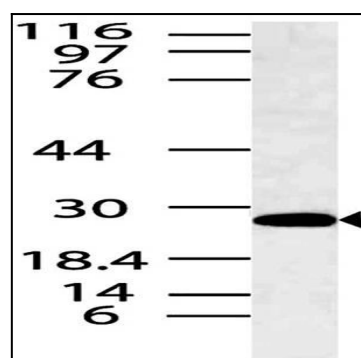


Fig-1: Western blot analysis of SpiB. Anti-SpiB antibody (11-4039) was used at 4 µg/ml on K562 lysate.