

11-8070: Polyclonal Antibody to KLF15

Clonality :	Polyclonal
Application :	WB
Reactivity :	Mouse,Human
Gene :	KLF15
Gene ID :	28999
Uniprot ID :	Q9UIH9
Format :	Purified
Alternative Name :	KLF15,KKLF
Isotype :	Rabbit IgG
Immunogen Information :	A partial length recombinant KLF15 protein (amino acids 50-300) was used as the immunogen for this antibody.

Description

KLF15 (Kruppel-like factor 15) is a 43 kDa protein belonging to Kruppel family of transcription regulators. KLF15 can either contribute in expression or suppression of specific genes. KLF15 contains three zinc-finger motifs. KLF15 interacts with the GA element of the kidney chloride channel protein (CLCNKA) promoter. KLF15 also regulates the cardiac ion channel expression thereby controlling the rhythmic expression of potassium channel-interacting protein-2 (KChIP). KLF18 is highly expressed in liver, heart, skeletal muscle and kidney.

Product Info

Amount :	25 µg / 100 µg
Purification :	Protein A Chromatography
Content :	25 µg in 50 µl/100 µg in 200 µl PBS containing 0.05% BSA and 0.05% sodium azide. Sodium azide is highly toxic.
Storage condition :	Store the antibody at 4°C, stable for 6 months. For long-term storage, store at -20°C. Avoid repeated freeze and thaw cycles.

Application Note

Western blot analysis: 2-4 µg/ml

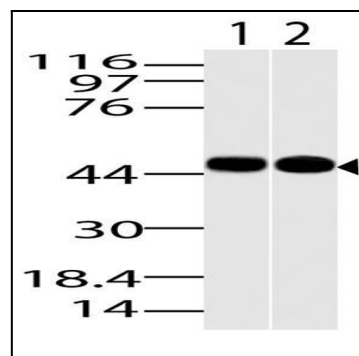


Fig-1: Western blot analysis of KLF15. Anti-KLF15 antibody (11-8070) was used at 4 µg/ml on 1) Heart, 2) 3T3 lysates.