

11-4021: Polyclonal Antibody to NR2F6

Clonality :	Polyclonal
Application :	IHC,WB
Reactivity :	Human
Gene :	NR2F6
Gene ID :	2063
Uniprot ID :	P10588
Format :	Purified
Alternative Name :	NR2F6,EAR2,ERBAL2
Isotype :	Rabbit IgG
Immunogen Information :	A partial length recombinant NR2F6 protein (amino acids 210-400) was used as the immunogen for this antibody.

Description

NR2F6 (Nuclear receptor subfamily 2 group F member 6) is a nuclear zinc-finger orphan receptor which acts as a critical PKC (protein kinase C) substrate and essential regulator of CD4(+) T cell activation responses. It inhibits NFATC (Nuclear factor of activated T-cells) transcription factor DNA binding and subsequently its transcriptional activity. It acts as transcriptional repressor of IL-17 expression in Th-17 differentiated CD4+ T cells and may be involved in induction and/or maintenance of peripheral immunological tolerance and autoimmunity. It is involved in development of forebrain circadian clock.

Product Info

Amount :	25 µg / 100 µg
Purification :	Protein A Chromatography
Content :	25 µg in 50 µl/100 µg in 200 µl PBS containing 0.05% BSA and 0.05% sodium azide. Sodium azide is highly toxic.
Storage condition :	Store the antibody at 4°C, stable for 6 months. For long-term storage, store at -20°C. Avoid repeated freeze and thaw cycles.

Application Note

Western blot analysis: 2-4 µg/ml, Immunohistochemical analysis: 5 µg/ml

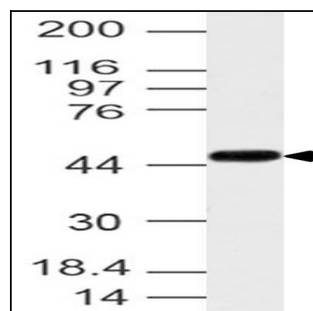


Fig-1: Western blot analysis of NR2F6. Anti-NR2F6 antibody (11-4021) was used at 4 µg/ml on MCF-7 lysate.

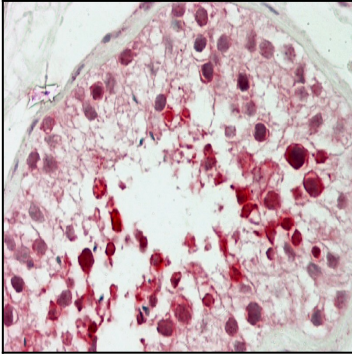


Fig-2: Immunohistochemical analysis of NR2F6. Anti-NR2F6 antibody (11-4021) in human Testis tissue at 5 μ g/ml.