

11-10018: Polyclonal Antibody to UBE1L2/MOP-4

| | |
|--------------------------------|--|
| Clonality : | Polyclonal |
| Application : | WB |
| Reactivity : | Human |
| Gene : | UBA6 |
| Gene ID : | 55236 |
| Uniprot ID : | A0AVT1 |
| Format : | Purified |
| Alternative Name : | UBA6,MOP4,UBE1L2 |
| Isotype : | Rabbit IgG |
| Immunogen Information : | A partial length recombinant UBE1L2 protein (amino acids 710-955) was used as the immunogen for this antibody. |

Description

Uba6/UBE1L2/MOP-4 is an ubiquitin-specific E1 type enzyme, homolog of the ubiquitin-activating enzyme, Uba1, which activates two ubiquitin-like proteins (UBLs), ubiquitin and FAT10. Some recent experiments suggest a testis-specific function of UBE1L2. UBE1L2 forms a thioester with FAT10 and this reaction requires the active-site cysteine of UBE1L2 and the C-terminal diglycine motif of FAT10. It can transfer ubiquitin to Ubc5 and Ubc13, suggesting its specialized role in ubiquitination reactions.

Product Info

| | |
|----------------------------|---|
| Amount : | 25 µg / 100 µg |
| Purification : | Protein A Chromatography |
| Content : | 25 µg in 50 µl/100 µg in 200 µl PBS containing 0.05% BSA and 0.05% sodium azide. Sodium azide is highly toxic. |
| Storage condition : | Store the antibody at 4°C, stable for 6 months. For long-term storage, store at -20°C. Avoid repeated freeze and thaw cycles. |

Application Note

Western blot analysis: 2-4 µg/ml

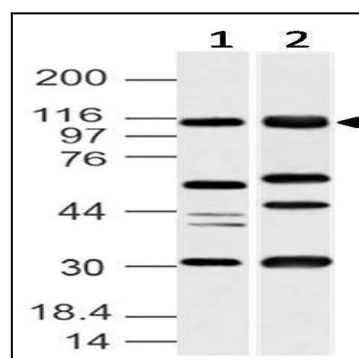


Fig-1: Western blot analysis of UBE1L2/MOP-4. Anti-UBE1L2/MOP-4 antibody (11-10018) was used at 4 µg/ml on (1) Jurkat and (2) K562 lysates.