

## 10-4089: Monoclonal Antibody to CD3 (Clone: OKT3)

<b>Clonality :</b>	Monoclonal
<b>Clone Name :</b>	OKT3
<b>Application :</b>	FACS
<b>Reactivity :</b>	Human
<b>Gene :</b>	CD3D
<b>Gene ID :</b>	915
<b>Uniprot ID :</b>	P04234
<b>Format :</b>	Purified
<b>Alternative Name :</b>	CD3D,T3D
<b>Isotype :</b>	Mouse IgG2a Kappa
<b>Immunogen Information :</b>	Human PBMCs were used as immunogen for the CD3 antibody.

### Description

CD3D is one of the several invariant chains that the variable chains of TCR: Alpha beta or Gamma delta TCR contains, and which support surface TCR expression and transduce the TCR signal. CD3D, along with four other CD3 subunits, binds either TCR alpha/beta or TCR gamma/delta to form the TCR/CD3 complex on the surface of T-cells. Defects in this gene are a cause of severe combined immunodeficiency autosomal recessive T-cell-negative/B-cell-positive/NK-cell-positive (SCIDBNK).

### Product Info

<b>Amount :</b>	25 µg / 100 µg
<b>Purification :</b>	Protein G Chromatography
<b>Content :</b>	25 µg in 50 µl/100 µg in 200 µl PBS containing 0.05% BSA and 0.05% sodium azide. Sodium azide is highly toxic.
<b>Storage condition :</b>	Store the antibody at 4°C, stable for 6 months. For long-term storage, store at -20°C. Avoid repeated freeze and thaw cycles.

### Application Note

FACS analysis: 0.1 µg/10<sup>6</sup> cells

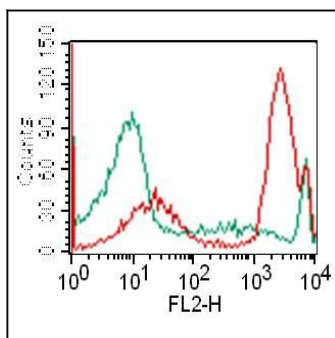


Fig-1: Cell Surface flow analysis of hCD3 in PBMC (Lymphocytes gated) using 0.1 µg/10<sup>6</sup> cells. Green represents isotype control (ABEOMICS); red represents anti-hCD3 antibody (10-4089). Goat anti-mouse PE conjugated secondary antibody was used (ABEOMICS).