

## 11-7545: Polyclonal Antibody to E Cadherin

<b>Clonality :</b>	Polyclonal
<b>Application :</b>	WB
<b>Reactivity :</b>	Human
<b>Gene :</b>	CDH1
<b>Gene ID :</b>	999
<b>Uniprot ID :</b>	P12830
<b>Format :</b>	Purified
<b>Alternative Name :</b>	CDH1,CDHE,UVO
<b>Isotype :</b>	Rabbit IgG
<b>Immunogen Information :</b>	A partial length recombinant E-cadherin protein (amino acids 438-556) was used as the immunogen for this antibody .

### Description

E-cadherin is a calcium-regulated adhesion molecule expressed in most normal epithelial tissues. It is localized on the surfaces of epithelial cells in regions of cell-cell contact known as adherens junctions. The E-cadherin gene is located on chromosome 16q22.1. E-cadherin is associated with gland formation, stratification, and epithelial polarization. Besides its role in normal cells, this highly conserved gene can play a major role in malignant cell transformation, and especially in tumor development and progression. Selective loss of E-cadherin can cause dedifferentiation and invasiveness in human carcinomas, leading E-cadherin to be classified as a tumor suppressor.

### Product Info

<b>Amount :</b>	25 µg / 100 µg
<b>Purification :</b>	Protein A Chromatography
<b>Content :</b>	25 µg in 50 µl/100 µg in 200 µl PBS containing 0.05% BSA and 0.05% sodium azide. Sodium azide is highly toxic.
<b>Storage condition :</b>	Store the antibody at 4°C; stable for 6 months. For long-term storage; store at -20°C. Avoid repeated freeze and thaw cycles.

### Application Note

Western blot analysis: 2-4 µg/ml

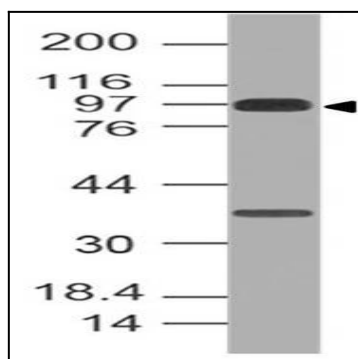


Fig-1: Expression analysis of E Cadherin. Anti-E Cadherin antibody (11-7545) was used at 2 µg/ml on h Stomach lysate.