

## 10-4166: Monoclonal Antibody to IL-36R (Clone: ABM47A2)

<b>Clonality :</b>	Monoclonal
<b>Clone Name :</b>	ABM47A2
<b>Application :</b>	FACS, WB
<b>Reactivity :</b>	Human
<b>Gene :</b>	IL1RL2
<b>Gene ID :</b>	8808
<b>Uniprot ID :</b>	Q9HB29
<b>Format :</b>	Purified
<b>Alternative Name :</b>	IL1RL2, IL1RRP2
<b>Isotype :</b>	Mouse IgG2b, kappa
<b>Immunogen Information :</b>	A partial length recombinant IL-36R protein (amino acids 1-203) was used as the immunogen for this antibody.

### Description

IL-36R is a member of the IL-1 receptor family that has been associated with various inflammation-associated diseases. Ligands binding to IL-36R subsequently recruit the IL-1RAcP (IL-1 Receptor Accessory Protein) forming a heterodimeric signaling complex. The latter is also used by IL-1Alpha and IL-1Beta. IL-36R is expressed by different immune cells, including Dendritic Cells, microglia and other myeloid cells. IL-36 stimulation of DC leads to the production of several cytokines by DC, including TNF- $\alpha$ , IL-1, IL-12, and IL-23. This interaction also enhances the expression of MHC class 2 and co-stimulatory molecules.

### Product Info

<b>Amount :</b>	25 $\mu$ g / 100 $\mu$ g
<b>Purification :</b>	Protein G Chromatography
<b>Content :</b>	25 $\mu$ g in 50 $\mu$ l/100 $\mu$ g in 200 $\mu$ l PBS containing 0.05% BSA and 0.05% sodium azide. Sodium azide is highly toxic.
<b>Storage condition :</b>	Store the antibody at 4°C; stable for 6 months. For long-term storage; store at -20°C. Avoid repeated freeze and thaw cycles.

### Application Note

Western blot analysis: 2-4  $\mu$ g/ml, Flowcytometric analysis: 0.5-1  $\mu$ g/10<sup>6</sup> Cells

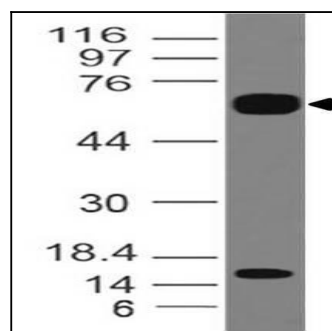


Figure-1: Western blot analysis of IL-36R. Anti-IL-36R antibody (Clone: ABM47A2) was tested at 2  $\mu$ g/ml on human Small Intestine lysate.

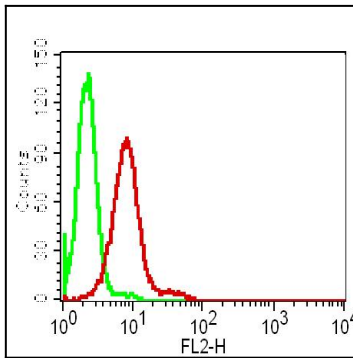


Figure-2: Intracellular Flowcytometric analysis of IL-36R in K562 cells using 0.5  $\mu\text{g}/10^6$  Cells of IL-36R antibody (Clone: ABM47A2). Green represent isotype control and red represent Anti-IL36R antibody. (ABEOMICS 10-4166). Goat Anti-Mouse PE conjugated was used as secondary antibody.