

## 20-1103: Polyclonal antibody to TRAIP (TRIP)

<b>Clonality :</b>	Polyclonal
<b>Application :</b>	IP,IHC,WB
<b>Reactivity :</b>	Human
<b>Gene :</b>	TRAIP
<b>Gene ID :</b>	10293
<b>Uniprot ID :</b>	Q9BWF2
<b>Format :</b>	Sera
<b>Alternative Name :</b>	TRAIP,RNF206,TRIP
<b>Isotype :</b>	Rabbit IgG
<b>Immunogen Information :</b>	A synthetic peptide of human TRIP ( amino acids 294-313 ESPAPVEVNLKLRPSFRDD) was used as immunogen for this antibody

### Description

TRIP (TRAF-interacting protein),also known as TRAIP is a component of receptor-TRAF signaling complexes. Structurally it contains an N-terminal RING finger motif and a putative coiled-coil domain and composed of 469 amino acid approximately. TRIP has been shown to associate with TRNFR2 or CD30 signaling complexes through its interaction with TRAF proteins and inhibit TRAF2-mediated NF-kB activation. The recruitment of different TRAFs and TRAF associated proteins like TRIP to receptor complexes can help regulate and provide specificity to the intracellular signals triggered by the cell surface receptors.

### Product Info

<b>Amount :</b>	50 µl
<b>Content :</b>	50 µl sera
<b>Storage condition :</b>	Store the antibody at 4°C, stable for 6 months. For long-term storage, store at -20°C. Avoid repeated freeze and thaw cycles.

### Application Note

WB: 1:1000-1:2000, IHC (paraffin): 1:1000-1:5000, IHC (frozen): Users should optimize, IP: 1:50-1:200

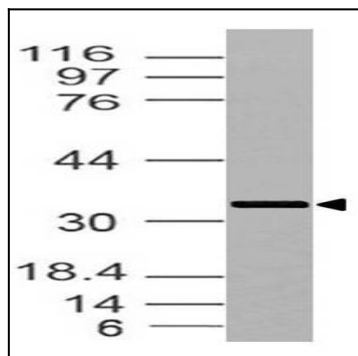


Figure-1: Western blot analysis of TRAIP. Anti- TRAIP antibody (20-1103) was used with 1:2000 dilution on A549 lysate.