

20-1102: Polyclonal antibody to TRAF-6

| | |
|--------------------------------|---|
| Clonality : | Polyclonal |
| Application : | IP,IHC,WB |
| Reactivity : | Rat,Mouse,Human |
| Gene : | TRAF6 |
| Gene ID : | 7189 |
| Uniprot ID : | Q9Y4K3 |
| Format : | Sera |
| Alternative Name : | TRAF6,RNF85 |
| Isotype : | Rabbit IgG |
| Immunogen Information : | A synthetic peptide of human TRAF-6 (amino acids 451-469 DAKPELLAFQRPTIPRNPK) was used as immunogen for this antibody |

Description

Human TRAF6 is a 522 amino acid protein. The TRAF (TNF receptor-associated factor) family is a group of adapter proteins (TRAFs 1-6) that link a wide variety of cell surface receptors to diverse signaling cascades leading to the activation of NF- κ B and mitogen-activated protein kinases. TRAFs are major signal transducers for both the TNF and IL- 1/TLR receptor superfamilies and collectively play important functions in both adaptive and innate immunity. The carboxy-terminal region of TRAFs is required for self-association and interaction with receptor cytoplasmic domains following ligand-induced oligomerization. TRAFs interact with a variety of proteins that regulate receptor-induced cell death or survival, and TRAF-mediated signaling can promote cell survival or interfere with death receptor-induced apoptosis.

Product Info

| | |
|----------------------------|---|
| Amount : | 50 μ l |
| Content : | 50 μ l sera |
| Storage condition : | Store the antibody at 4°C, stable for 6 months. For long-term storage, store at -20°C. Avoid repeated freeze and thaw cycles. |

Application Note

WB: 1:1000-1:2000, IHC (paraffin): 1:1000-1:5000, IHC (frozen): Users should optimize, IP: 1:50-1:200

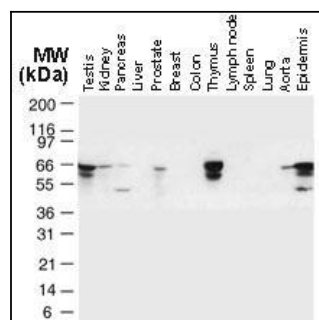


Fig:1 Western blot analysis of TRAF6 in normal human tissues using 20-1102 at 1:2000. TRAF6 is observed at ~66 kDa. Additional bands of lower molecular weight were seen in some cases, and may represent TRAF6 degradation fragments.

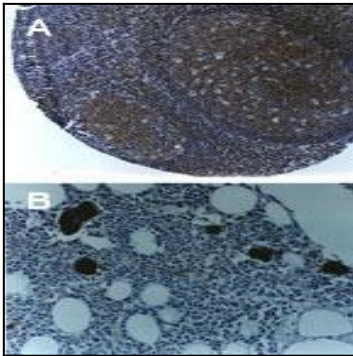


Fig:2 Formalin-fixed, paraffin- embedded tissue sections stained for TRAF6 using 20-1102 at 1:2000. Hematoxylin-eosin counterstain. A, mouse lymph node. B, mouse bone marrow.

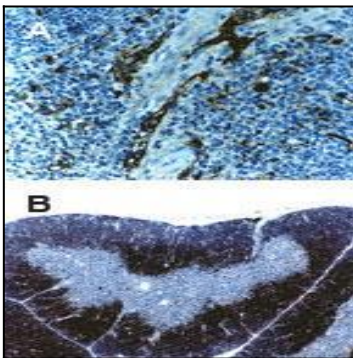


Fig:3 Formalin-fixed, paraffin- embedded tissue sections stained for TRAF6 using 20-1102 at 1:2000. Hematoxylin-eosin counterstain. A, mouse spleen. B, mouse thymus.