

## 20-1091: Polyclonal antibody to Survivin

<b>Clonality :</b>	Polyclonal
<b>Application :</b>	IP,IHC,WB
<b>Reactivity :</b>	Rat,Mouse,Human
<b>Gene :</b>	birc5.1-a
<b>Gene ID :</b>	394382
<b>Uniprot ID :</b>	Q8JGN5
<b>Format :</b>	Sera
<b>Alternative Name :</b>	birc5.1-a,bir1-A,svv1
<b>Isotype :</b>	Rabbit IgG
<b>Immunogen Information :</b>	A Full-length recombinant protein of human Survivin was used as immunogen for this antibody

### Description

Survivin is a member of the family of inhibitor of apoptosis proteins (IAP), and is involved in both the control of apoptosis and regulation of cell division. IAPs suppress mitochondria-dependent and -independent apoptosis by binding to and inhibiting caspases through their BIR domains. It is a 142 amino acid protein with an approximate molecular weight of 16.5 kDa. Structurally, survivin is composed of a single BIR domain and an extended COOH-terminal  $\alpha$ -helical coiled-coil domain and is highly expressed in embryonic and fetal organs. Survivin is undetectable in most normal differentiated and non-proliferating tissues, but is highly expressed in majority of human tumor types including lung, breast, colon, gastric, leukemias, neuroblastoma, brain tumors, pheochromocytoma, soft tissue sarcomas, melanomas and other skin tumors. Additionally, survivin expression has also been detected in a variety of preneoplastic or benign lesions, suggesting that re-expression of survivin may occur early during malignant transformation or following a disruption in the balance between cell division and apoptosis.

### Product Info

<b>Amount :</b>	50 $\mu$ l
<b>Content :</b>	50 $\mu$ l sera
<b>Storage condition :</b>	Store the antibody at 4°C, stable for 6 months. For long-term storage, store at -20°C. Avoid repeated freeze and thaw cycles.

### Application Note

WB: 1:1000-1:2000, IHC (paraffin): 1:1000-1:5000, IHC (frozen): Users should optimize, IP: 1:50-1:200

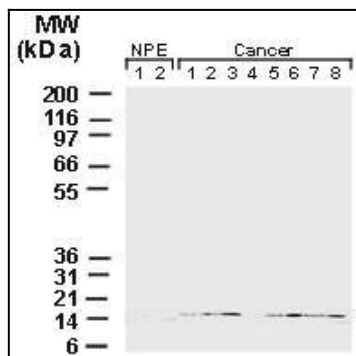


Fig:1 Western blot analysis of Survivin in normal prostate epithelium (NPE) and prostate cancer using 20-1091 at 1:2000. 100 ug/lane of each human tissue lysate was loaded per lane. Survivin was detected in 7 out of 8 prostate cancer patient specimens, but was not detected in NPE.

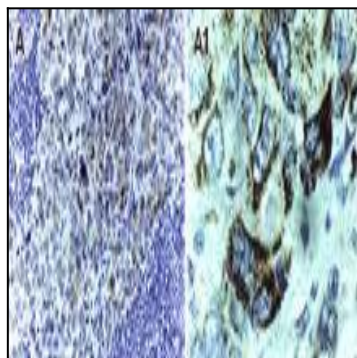


Fig:2 Immunohistochemical analysis of Survivin in formalin-fixed, paraffin-embedded human esophageal cancer using 20-1091 at 1:2000. A1 is a high magnification of A. Hematoxylin-eosin counterstain.

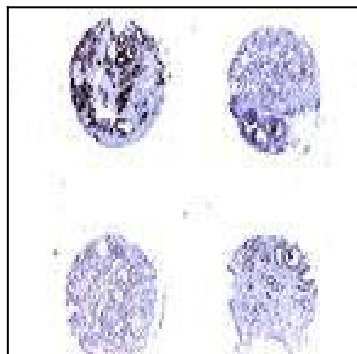


Fig:3 Immunohistochemical analysis of Survivin in a formalin-fixed, paraffin-embedded human prostate cancer array 20-1091 at 1:2000. A1 is a high magnification of A. Differential expression of Survivin is seen in tissue cores from four different prostate cancer patients. Hematoxylin-eosin counterstain.