

20-1025: Polyclonal antibody to Bcl-2

Clonality :	Polyclonal
Application :	IP,IHC,WB
Reactivity :	Dog,Human
Gene :	BCL2
Gene ID :	596
Uniprot ID :	P10415
Format :	Sera
Alternative Name :	BCL2
Isotype :	Rabbit IgG
Immunogen Information :	A synthetic peptide of Bcl-2 protein (amino acids 41-54 GAAPAGIFSSQPG) was used as the immunogen for this antibody

Description

This antibody recognizes both Bcl-2 alpha and beta isoforms. Human Bcl-2 alpha is a 239 amino acid (aa) protein and human Bcl-2 beta is a 205 aa protein. The Bcl-2 family of apoptosis-related genes plays central roles in regulating apoptotic pathways. Regulation of cell death through apoptosis is critical for the maintenance of homeostasis, defense against infectious agents, and normal development. Bcl-2 family proteins regulate apoptosis primarily through the regulation of mitochondrial outer membrane permeability. In mammals, Bcl-2 family proteins can be divided into 3 main subfamilies on the basis of their function and the content of their Bcl-2 homology (BH) domains, for example: 1) Prosurvival: Bcl-2, Bcl-XL, Bcl-W, A1, and Mcl-1 2) Proapoptotic (multidomain): Bax, Bak, and Bok. 3) BH3-only (proapoptotic): Bad, Bcl-XS, Bid, Bik, Bim, Blk, Bmf, Bnip, Noxa, and Puma. Many Bcl-2 family proteins are differentially expressed in various malignancies and some are useful prognostic biomarkers. Prosurvival proteins are often elevated in diverse cancers and have the potential to confer resistance to both endogenous cell death stimuli and cancer treatments. Alterations in the ratio or levels of Bcl-2 family proteins have been also associated with nonmalignant diseases including neurodegenerative diseases, autoimmune diseases, AIDs, Down's syndrome, cardiovascular diseases, diabetes, glomerulonephritis, and muscular dystrophy.

Product Info

Amount :	50 µl
Content :	50 µl sera
Storage condition :	Store the antibody at 4°C, stable for 6 months. For long-term storage, store at -20°C. Avoid repeated freeze and thaw cycles.

Application Note

WB: 1:1000-1:2000, IHC (paraffin): 1:1000-1:5000, IHC (frozen): Users should optimize, IP: 1:50-1:200

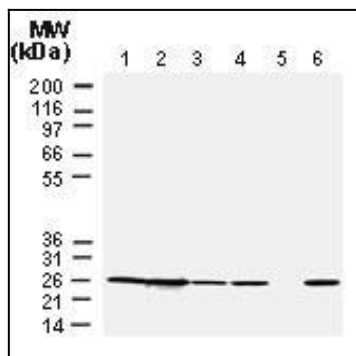


Fig:1 Western blot analysis of Bcl-2 using 20-1025 at 1:2000. 20 ug/protein was loaded per lane. Lane 1. Human Jurkat T cells. Lane 2. Human RS11 lymphoma cells. Lanes 3-6. Human breast cancer cases. Patient sample in lane 5 lacked detectable Bcl-2 expression.