

10-101-F: Mouse IgG1 Isotype Control (Clone: MOPC31C)- FITC

Clonality : Monoclonal
Clone Name : MOPC31C
Application : IHC,FACS
Conjugate : FITC
Format : Purified
Isotype : Mouse IgG1

Description

A mouse isotype control is an antibody of the same class (isotype) of immunoglobulin as the specific mouse antibody, but is either myeloma-derived antibody of unknown specificity, or is raised against an antigen that is presumed not to be present on or in the cells under study. Isotype control antibodies are used for the estimation of non-specific binding of target primary antibodies to cell surface antigens.

Product Info

Amount : 25 µg / 100 µg
Purification : Affinity Chromatography
Content : 0.2 mg/ml in Tris buffer containing 0.05% Azide
Storage condition : Store the Isotype control at 4°C, stable for 6 months.

Application Note

FACS: 0.25-2 µg/10⁶ cells

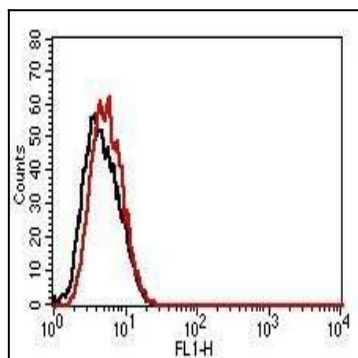


Fig-1: Cell surface flow analysis of FITC-conjugated Mouse IgG1 isotype control in THP-1 cell line using 2 µg/10⁶ cells (Clone: MOPC31C). Black represents cell only; red represents mouse IgG1 isotype control conjugated with FITC.