

11-8067: Polyclonal Antibody to KLF10

Clonality :	Polyclonal
Application :	WB
Reactivity :	Human
Gene :	KLF10
Gene ID :	7071
Uniprot ID :	Q13118
Format :	Purified
Alternative Name :	KLF10,TIEG,TIEG1
Isotype :	Rabbit IgG
Immunogen Information :	A partial length recombinant KLF10 protein (amino acids 11-221) was used as the immunogen for this antibody.

Description

Kruppel-like factor 10 (KLF10) is a member of the Kruppel-like family of transcription factors, which are known to be involved in anti-proliferative and apoptotic inducing functions following TGF-beta induction. KLF10 plays an important role in the repression of proliferative and hypertrophic pathways, possibly through the actions of PTTG1 (pituitary tumor-transforming gene 1). KLF10 is found to be predominantly expressed in various tissues and its expression is regulated by cytokines and growth factors. Over-expression of KLF10 has been found to induce apoptosis in pancreatic cancer cells. In addition, KLF10 induces apoptosis via a mechanism which involves the formation of reactive oxygen species.

Product Info

Amount :	25 µg / 100 µg
Purification :	Protein A Chromatography
Content :	25 µg in 50 µl/100 µg in 200 µl PBS containing 0.05% BSA and 0.05% sodium azide. Sodium azide is highly toxic.
Storage condition :	Store the antibody at 4°C; stable for 6 months. For long-term storage; store at -20°C. Avoid repeated freeze and thaw cycles.

Application Note

Western blot analysis: 1-2 µg/ml

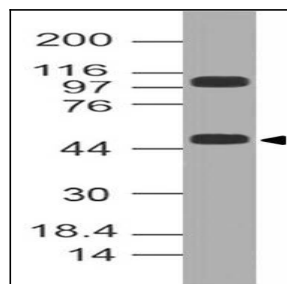


Fig-1: Western blot analysis of KLF10. Anti-KLF10 antibody (11-8067) was used at 1 µg/ml on Hela lysate.