

## 11-12012: Polyclonal Antibody to Cbx5

<b>Clonality :</b>	Polyclonal
<b>Application :</b>	WB
<b>Reactivity :</b>	Human
<b>Gene :</b>	CBX5
<b>Gene ID :</b>	23468
<b>Uniprot ID :</b>	P45973
<b>Format :</b>	Purified
<b>Alternative Name :</b>	CBX5,HP1A
<b>Isotype :</b>	Rabbit IgG

**Immunogen Information :** Full length recombinant Cbx5 protein was used as the immunogen for this antibody.

### Description

Chromobox homolog 5 (Cbx5), also known as HP1 is an evolutionarily conserved non-histone chromosomal protein involved in many biological processes, such as heterochromatin formation, transcriptional regulation, DNA recombination and damage repair, RNA interference, kinetochore protein assembly, chromatin condensation and sister chromatid cohesion regulation. It binds lysine 9-methylated histone H3 (H3K9me), a hallmark of heterochromatin, and plays a crucial role in forming higher-order chromatin structures. Cbx5 has a conserved N-terminal chromo domain (CD), a non-conserved hinge region, and a C-terminal chromo shadow domain. It localizes to centromeres in interphase through its CD domain, whereas mitotic centromeric localization depends on the CSD domain (CSD). Down regulation of Cbx5 has also been linked to the higher invasive potential of breast cancer cells.

### Product Info

<b>Amount :</b>	25 µg / 100 µg
<b>Purification :</b>	Protein A Chromatography
<b>Content :</b>	25 µg in 50 µl/100 µg in 200 µl PBS containing 0.05% BSA and 0.05% sodium azide. Sodium azide is highly toxic.
<b>Storage condition :</b>	Store the antibody at 4°C; stable for 6 months. For long-term storage; store at -20°C. Avoid repeated freeze and thaw cycles.

### Application Note

Western blot analysis: 1-2 µg/ml

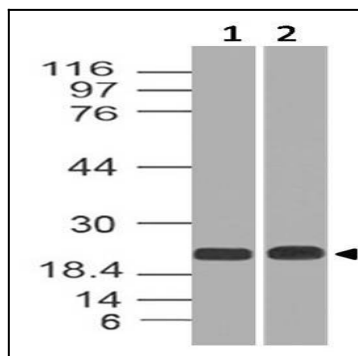


Fig-1: Expression analysis of Cbx5. Anti-Cbx5 antibody (11-12012) was used at 1 µg/ml on (1) MCF-7 and (2) HeLa lysates.