

## 11-12014: Polyclonal Antibody to SC1

<b>Clonality :</b>	Polyclonal
<b>Application :</b>	WB
<b>Reactivity :</b>	Human
<b>Gene :</b>	TCF19
<b>Gene ID :</b>	6941
<b>Uniprot ID :</b>	Q9Y242
<b>Format :</b>	Purified
<b>Alternative Name :</b>	TCF19,SC1
<b>Isotype :</b>	Rabbit IgG
<b>Immunogen Information :</b>	A partial length recombinant SC1 protein (amino acids 86-291) was used as the immunogen for this antibody.

### Description

SC1 is a putative transactivating factor, with expression beginning at the late G1/S boundary in dividing cells. It contains a FHA association (Forkhead) domain, which may serve as a nuclear signaling domain or as a phosphoprotein binding domain. SC1 is expressed in mouse and human islets, with increasing mRNA expression in nondiabetic obesity. The expression of SC1 is correlated with Beta-cell mass expansion, suggesting that it may be a transcriptional regulator of Beta-cell mass.

### Product Info

<b>Amount :</b>	25 µg / 100 µg
<b>Purification :</b>	Protein A Chromatography
<b>Content :</b>	25 µg in 50 µl / 100 µg in 200 µl PBS containing 0.05% BSA and 0.05% sodium azide. Sodium azide is highly toxic.
<b>Storage condition :</b>	Store the antibody at 4°C; stable for 6 months. For long-term storage; store at -20°C. Avoid repeated freeze and thaw cycles.

### Application Note

Western blot analysis: 1-2 µg/ml

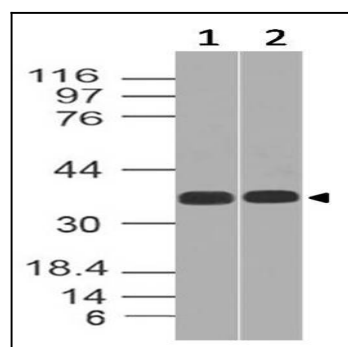


Fig-1: Expression analysis of SC1. Anti-SC1 antibody (11-12014) was used at 1 µg/ml on (1) h Spleen and (2) PC3 lysates.