

11-12035: Polyclonal Antibody to Stellar

Clonality :	Polyclonal
Application :	WB
Reactivity :	Human
Gene :	DPPA3
Gene ID :	359787
Uniprot ID :	Q6W0C5
Format :	Purified
Alternative Name :	DPPA3,STELLAR
Isotype :	Rabbit IgG
Immunogen Information :	Full length recombinant Stellar protein was used as the immunogen for this antibody.

Description

Stella-related (STELLAR) or Developmental pluripotency associated 3 pseudogene 2 (DPPA3P2) protein is a highly divergent protein (with just 32.1% identity to mouse stella over the 159 amino acid sequence) that maps to human chromosome 12p13. Human STELLAR is located distal to a previously uncharacterized homeobox gene, which is the human homolog of the recently identified murine gene, Nanog, and proximal to the GDF3 locus, whose transcription is restricted to germ cell tumor cells. STELLAR is enriched in organs containing pluripotent cells. STELLAR expression was found in fetal ovary with no detectable expression in any other fetal somatic tissue. STELLAR is generally localized to the ovary and testis in undifferentiated lines, and that expression decreased with differentiation.

Product Info

Amount :	25 µg / 100 µg
Purification :	Protein A Chromatography
Content :	25 µg in 50 µl/100 µg in 200 µl PBS containing 0.05% BSA and 0.05% sodium azide. Sodium azide is highly toxic.
Storage condition :	Store the antibody at 4°C; stable for 6 months. For long-term storage; store at -20°C. Avoid repeated freeze and thaw cycles.

Application Note

Western blot analysis: 2-4 µg/ml

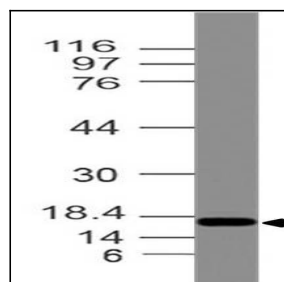


Fig-1: Expression analysis Stellar. Anti-Stellar antibody (11-12035) was used at 2 µg/ml on HepG2 lysate.