

10-8004: Monoclonal Antibody to MITF (Clone: ABM1H91)

Clonality :	Monoclonal
Clone Name :	ABM1H91
Application :	IHC,WB
Reactivity :	Mouse,Human
Gene :	MITF
Gene ID :	4286
Uniprot ID :	O75030
Format :	Purified
Alternative Name :	MITF,BHLHE32
Isotype :	Mouse IgG1 Kappa
Immunogen Information :	A partial length recombinant MITF protein (amino acids 150-427) was used as the immunogen for this antibody.

Description

MITF (Microphthalmia-associated transcription factor) is a basic helix-loop-helix leucine zipper (bHLH-Zip) family factor, involved in lineage-specific pathway regulation of many types of cells including osteoclasts, melanocytes, retinal pigment epithelial cells, mast cells and natural killer cells. It plays a critical role in melanogenesis as a transcriptional activator of tyrosinase, TRP-1, and TRP-2. Moreover, it regulates specification, survival, and proliferation of normal melanocytes, and controls proliferation, migration and invasion of melanoma cells. MITF is the most characterized member of the MIT family, mutations of which can lead to diseases such as Melanoma, Waardenburg syndrome, and Tietz syndrome.

Product Info

Amount :	25 µg / 100 µg
Purification :	Protein G Chromatography
Content :	25 µg in 50 µl/100 µg in 200 µl PBS containing 0.05% BSA and 0.05% sodium azide. Sodium azide is highly toxic.
Storage condition :	Store the antibody at 4°C, stable for 6 months. For long-term storage, store at -20°C. Avoid repeated freeze and thaw cycles.

Application Note

Western blot analysis: 2-4 µg/ml, Immunohistochemical analysis: 10 µg/ml

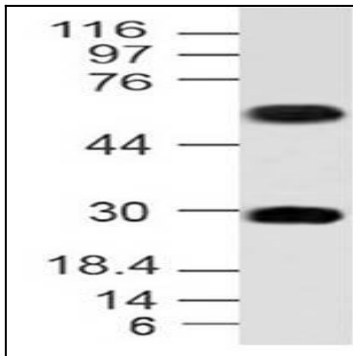


Fig-1: Western blot analysis of MITF. Anti- MITF antibody (Clone: ABM1H91) was tested at 4 $\mu\text{g/ml}$ on mouse Brain lysate.

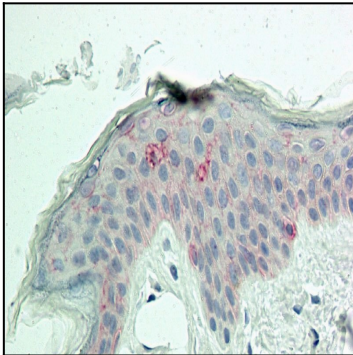


Fig: 2 Immunohistochemical analysis of MITF in human Skin tissue using MITF antibody (Clone: ABM1H91) at 10 $\mu\text{g/ml}$.