

36-1037: Monoclonal Antibody to HCG-beta (Pregnancy & Choriocarcinoma Marker)(Clone : HCGb/54)

Clonality :	Monoclonal
Clone Name :	HCGb/54
Application :	IHC
Reactivity :	Human
Gene :	CGB
Gene ID :	1082
Uniprot ID :	P01233
Format :	Purified
Alternative Name :	CGB,CGB3
Isotype :	Mouse IgG1, kappa
Immunogen Information :	Recombinant hCG beta protein

Description

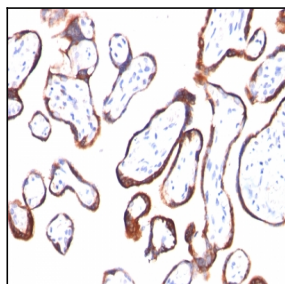
This MAb reacts with a protein of 22kDa, identified as β sub-unit of HCG. It does not cross react with the α sub-unit. HCG is a glycoprotein, which is secreted in large quantities by normal trophoblasts. It is present only in trace amounts in non-pregnant urine and sera but rises sharply during pregnancy. HCG is composed of two non-identical, non-covalently linked polypeptide chains designated as the α and β subunits. The α subunit is identical to that of thyroid stimulating hormone (TSH), follicle stimulating hormone (FSH), and luteinizing hormone (LH). hCG MAb detects cells and tumors of trophoblastic origin such as choriocarcinoma. Large cell carcinoma and adenocarcinoma of the lung demonstrate anti-hCG positivity in 90% and 60% of cases respectively. 20% of lung squamous cell carcinomas are positive. hCG expression by non-trophoblastic tumors may indicate aggressive behavior.

Product Info

Amount :	100 μ g
Purification :	Affinity Chromatography
Content :	100 μ g in 500 μ l PBS containing 0.05% BSA and 0.05% sodium azide. Sodium azide is highly toxic.
Storage condition :	Store the antibody at 4°C; stable for 6 months. For long-term storage; store at -20°C. Avoid repeated freeze and thaw cycles.

Application Note

Immunohistochemistry (Formalin-fixed) (1-2ug/ml) (Staining of formalin-fixed tissues requires heating tissue sections in 10mM Tris with 1mM EDTA, pH 9.0, for 45 min at 95°C followed by cooling at RT for 20 minutes);



Formalin-fixed, paraffin-embedded human Placenta stained with hCG beta Monoclonal Antibody (HCGb/54).