

36-1029: Monoclonal Antibody to Carcinoembryonic Antigen (CEA) / CD66(COL-1 + CEA31 + C66/261)

Clonality :	Monoclonal
Clone Name :	COL-1 + CEA31 + C66/261
Application :	FACS,IF,IHC
Reactivity :	Human
Gene :	CEACAM5
Gene ID :	1048
Uniprot ID :	P06731
Format :	Purified
Alternative Name :	CEACAM5,CEA
Isotype :	Mouse/IgG2a (COL-1) + Mouse/IgG1 (CEA31 and C66/261)
Immunogen Information :	Human colon carcinoma extract (COL-1 & CEA31); Recombinant full-length human CEA protein (C66/261)

Description

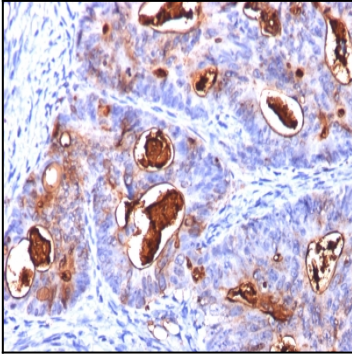
This antibody recognizes proteins of 80-200kDa, identified as different members of CEA family. CEA is synthesized during development in the fetal gut and is re-expressed in increased amounts in intestinal carcinomas and several other tumors. This MAb does not react with nonspecific cross-reacting antigen (NCA) and with human polymorphonuclear leucocytes. It shows no reaction with a variety of normal tissues and is suitable for staining of formalin/paraffin tissues. CEA is not found in benign glands, stroma, or malignant prostatic cells. Antibody to CEA is useful in detecting early foci of gastric carcinoma and in distinguishing pulmonary adenocarcinomas (60-70% are CEA+) from pleural mesotheliomas (rarely or weakly CEA+). Anti-CEA positivity is seen in adenocarcinomas from the lung, colon, stomach, esophagus, pancreas, gallbladder, urachus, salivary gland, ovary, and endocervix.?

Product Info

Amount :	100 µg
Purification :	Affinity Chromatography
Content :	100 µg in 500 µl PBS containing 0.05% BSA and 0.05% sodium azide. Sodium azide is highly toxic.
Storage condition :	Store the antibody at 4°C; stable for 6 months. For long-term storage; store at -20°C. Avoid repeated freeze and thaw cycles.

Application Note

Flow Cytometry (0.5-1ug/million cells); Immunofluorescence (0.5-1ug/ml); Immunohistochemistry (Formalin-fixed) (1-2ug/ml for 30 minutes at RT),(Staining of formalin-fixed tissues requires heating tissue sections in 10mM Tris with 1mM EDTA, pH 9.0, for 45 min at 95 °C followed by cooling at RT for 20 minutes),



Formalin-fixed, paraffin-embedded human Colon Carcinoma stained with CEA Monoclonal Antibody (COL-1+CEA31+C66/261)