

36-1129: Monoclonal Antibody to MART-1 / Melan-A / MLANA (Melanoma Marker)(Clone : M2-9E3)

| | |
|--------------------------------|-----------------------------|
| Clonality : | Monoclonal |
| Clone Name : | M2-9E3 |
| Application : | FACS,IF,WB,IHC |
| Reactivity : | Human, Mouse, Rat |
| Gene : | MLANA |
| Gene ID : | 2315 |
| Uniprot ID : | Q16655 |
| Format : | Purified |
| Alternative Name : | MLANA,MART1 |
| Isotype : | Mouse IgG2b, kappa |
| Immunogen Information : | Recombinant hMART-1 protein |

Description

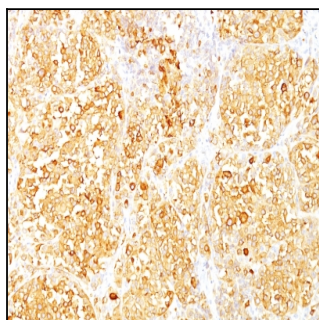
This antibody recognizes a protein doublet of 20-22kDa, identified as MART-1 (Melanoma Antigen Recognized by T cells 1) or Melan-A. MART-1 is a newly identified melanocyte differentiation antigen recognized by autologous cytotoxic T lymphocytes. Seven other melanoma associated antigens recognized by autologous cytotoxic T cells include MAGE-1, MAGE-3, tyrosinase, gp100, gp75, BAGE-1, and GAGE-1. Subcellular fractionation shows that MART-1 is present in melanosomes and endoplasmic reticulum. This MAb labels melanomas and other tumors showing melanocytic differentiation. It is also a useful positive-marker for angiomylipomas. It does not stain tumor cells of epithelial, lymphoid, glial, or mesenchymal origin.

Product Info

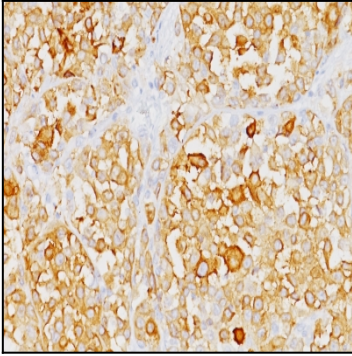
| | |
|----------------------------|---|
| Amount : | 100 µg |
| Purification : | Affinity Chromatography |
| Content : | 100 µg in 500 µl PBS containing 0.05% BSA and 0.05% sodium azide. Sodium azide is highly toxic. |
| Storage condition : | Store the antibody at 4°C; stable for 6 months. For long-term storage; store at -20°C. Avoid repeated freeze and thaw cycles. |

Application Note

Flow Cytometry (1-2ug/million cells); Immunofluorescence (1-2ug/ml); Western Blot (1-2ug/ml); Immunohistochemistry (Formalin-fixed) (1-2ug/ml for 30 minutes at RT)(Staining of formalin-fixed tissues requires heating tissue sections in 10mM Tris with 1mM EDTA, pH 9.0, for 45 min at 95°C followed by cooling at RT for 20 minutes);



Formalin-fixed, paraffin-embedded human Melanoma stained with Melan-A Monoclonal Antibody (M2-9E3).



Formalin-fixed, paraffin-embedded human Melanoma stained with Melan-A Monoclonal Antibody (M2-9E3).