

36-1152: Monoclonal Antibody to Alkaline Phosphatase (Intestinal)(Clone : ALPI/597)(Discontinued)(Discontinued)

Clonality :	Monoclonal
Clone Name :	ALPI/597
Application :	IHC,FACS,IF
Gene :	ALPL
Gene ID :	249
Uniprot ID :	P05186
Format :	Purified
Alternative Name :	ALPL
Isotype :	Mouse IgG1 Kappa
Immunogen Information :	Recombinant human ALP1 protein

Description

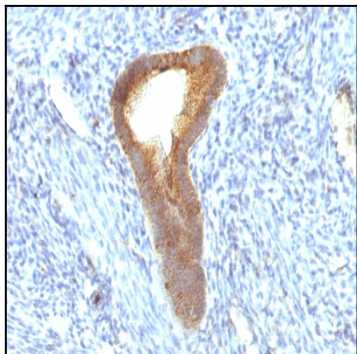
There are at least four distinct but related alkaline phosphatases: intestinal, placental, placental-like, and liver/bone/kidney (tissue non-specific). The first three are located together on chromosome 2, while the tissue non-specific form is located on chromosome 1. The product of this gene is a membrane bound glycosylated enzyme that is not expressed in any particular tissue and is, therefore, referred to as the tissue-nonspecific form of the enzyme. The exact physiological function of the alkaline phosphatases is not known. A proposed function of this form of the enzyme is matrix mineralization; however, mice that lack a functional form of this enzyme show normal skeletal development. This enzyme has been linked directly to hypo-phosphatasia, a disorder that is characterized by hypercalcemia and includes skeletal defects. The character of this disorder can vary, however, depending on the specific mutation since this determines age of onset and severity of symptoms. Alternatively spliced transcript variants, which encode the same protein, have been identified for this gene.

Product Info

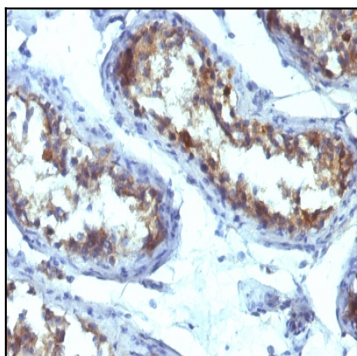
Amount :	100 µg
Purification :	Affinity Chromatography
Content :	100 µg in 500 µl PBS containing 0.05% BSA and 0.05% sodium azide. Sodium azide is highly toxic.
Storage condition :	Store the antibody at 4°C; stable for 6 months. For long-term storage; store at -20°C. Avoid repeated freeze and thaw cycles.

Application Note

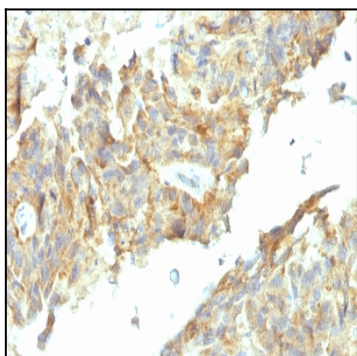
Flow Cytometry (5-10ul/million cells in 0.1ml); Immunofluorescence (1:50-1:100); Immunohistology (Formalin-fixed) (1:50-1:100 for 30 min at Room Temp); (Staining of formalin-fixed tissues requires boiling tissue sections in 10mM Tris with 1mM EDTA, pH 9.0, for 10-20 min followed by cooling at RT for 20 minutes); Optimal dilution for a specific application should be determined.



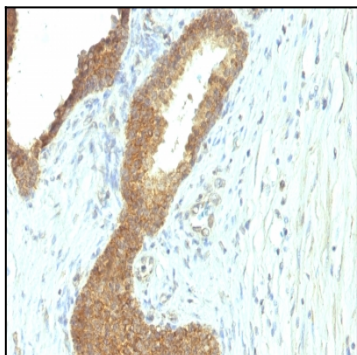
Formalin-fixed, paraffin-embedded human Endometrial Carcinoma stained with Alkaline Phosphatase Monoclonal Antibody (ALPI/597).



Formalin-fixed, paraffin-embedded human Testicular Carcinoma stained with Alkaline Phosphatase Monoclonal Antibody (ALPI/597).



Formalin-fixed, paraffin-embedded human Ovarian Carcinoma stained with Alkaline Phosphatase Monoclonal Antibody (ALPI/597).



Formalin-fixed, paraffin-embedded human Colon Carcinoma stained with Alkaline Phosphatase Monoclonal Antibody (ALPI/597).