

## 36-1161: Monoclonal Antibody to CD15 / FUT4 (Reed-Sternberg Cell Marker)(Clone : Leu-M1; same as MMA)

<b>Clonality :</b>	Monoclonal
<b>Clone Name :</b>	Leu-M1; same as MMA
<b>Application :</b>	FACS,IF,IHC
<b>Reactivity :</b>	Human
<b>Gene :</b>	FUT4
<b>Gene ID :</b>	2526
<b>Uniprot ID :</b>	P22083
<b>Format :</b>	Purified
<b>Alternative Name :</b>	FUT4,ELFT,FCT3A
<b>Isotype :</b>	Mouse IgM, kappa
<b>Immunogen Information :</b>	U937 histiocytic cell line

### Description

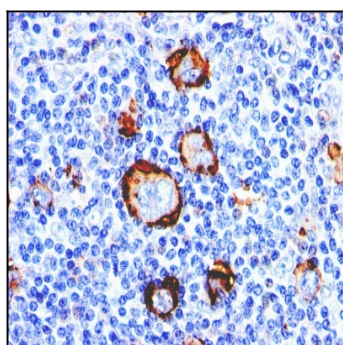
CD15 plays a role in mediating phagocytosis, bactericidal activity, and chemotaxis. It is present on >95% of granulocytes including neutrophils and eosinophils and to a lesser degree on monocytes. In addition, CD15 is expressed in Reed-Sternberg cells and some epithelial cells. CD15 antibody is very useful in the identification of Hodgkin's disease. CD15 is occasionally expressed in large cell lymphomas of both B and T phenotypes which otherwise have a quite distinct histological appearance.

### Product Info

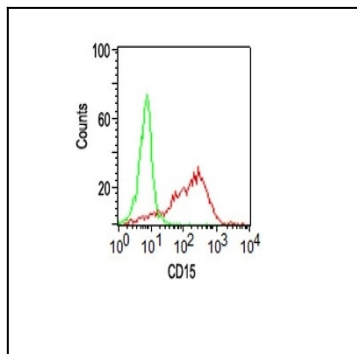
<b>Amount :</b>	100 µg
<b>Purification :</b>	Affinity Chromatography
<b>Content :</b>	100 µg in 500 µl PBS containing 0.05% BSA and 0.05% sodium azide. Sodium azide is highly toxic.
<b>Storage condition :</b>	Store the antibody at 4°C; stable for 6 months. For long-term storage; store at -20°C. Avoid repeated freeze and thaw cycles.

### Application Note

Flow Cytometry (1-2ug/million cells); Immunofluorescence (1-2ug/ml); Immunohistochemistry (Formalin-fixed) (1-2ug/ml for 30 minutes at RT)(Staining of formalin-fixed tissues requires heating tissue sections in 10mM Tris with 1mM EDTA, pH 9.0, for 45 min at 95°C followed by cooling at RT for 20 minutes)



Formalin-fixed, paraffin-embedded human Hodgkin's Lymphoma stained with CD15 Monoclonal Antibody (Leu-M1).



FACS analysis of human Monocytes using CD15 Monoclonal Antibody (Leu-M1).