

## 10-4120: Monoclonal Antibody to CLEC4E (Clone: ABM42E6)

<b>Clonality :</b>	Monoclonal
<b>Clone Name :</b>	ABM42C6
<b>Application :</b>	FACS,WB
<b>Reactivity :</b>	Human
<b>Gene :</b>	CLEC4E
<b>Gene ID :</b>	26253
<b>Uniprot ID :</b>	Q9ULY5
<b>Format :</b>	Purified
<b>Alternative Name :</b>	CLEC4E,CLECSF9,MINCLE,UNQ218/PRO244
<b>Isotype :</b>	Mouse IgG1 Kappa
<b>Immunogen Information :</b>	A full length human CLEC4E protein was used as the immunogen for this antibody.

### Description

CLEC4E (C-type lectin domain family 4, member E), also called as Mincle, is a type II transmembrane C-type lectin receptor that specifically binds to the cord factor TDM (trehalose-6,6'-dimycolate), a unique glycolipid of mycobacterial cell-surface components, and activates immune cells to confer adjuvant activity. Members of this family share a common protein fold and have diverse functions, such as cell adhesion, cell-cell signaling, glycoprotein turnover, and roles in inflammation and immune response. CLEC4E is mainly expressed in myeloid cells, such as macrophages and neutrophils and possesses a single carbohydrate-recognition domain (CRD) in the extracellular region. It is associated with FcRgamma chain, an immunoreceptor tyrosine-based activation motif (ITAM)-containing adaptor, and acts as an activating receptor that senses damaged cells. CLEC4E is also a downstream target of CCAAT/enhancer binding protein (C/EBP), beta (CEBPbeta) and may play a role in inflammation.

### Product Info

<b>Amount :</b>	25 µg / 100 µg
<b>Purification :</b>	Protein G Chromatography
<b>Content :</b>	25 µg in 50 µl/100 µg in 200 µl PBS containing 0.05% BSA and 0.05% sodium azide. Sodium azide is highly toxic.
<b>Storage condition :</b>	Store the antibody at 4°C, stable for 6 months. For long-term storage, store at -20°C. Avoid repeated freeze and thaw cycles.

### Application Note

Western blot analysis: 2-4 µg/ml, Flowcytometric analysis: 0.5-1 µg/10<sup>6</sup> cells

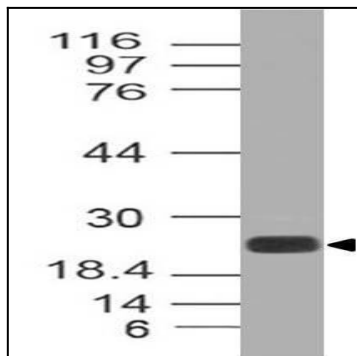


Figure-1: Western blot analysis of CLEC4E. Anti-CLEC4E antibody (Clone: ABM42C6) was tested at 2 µg/ml on THP-1 lysate.

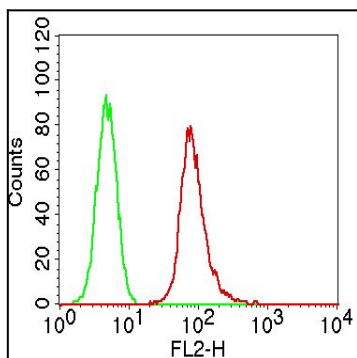


Figure-2: cell surface flowcytometric analysis of Anti-CLEC4E in A431 cells using 0.5 µg/10<sup>6</sup> cells of Anti-CLEC4E (clone: ABM42C6) . Green represent isotype control and red represent Anti-CLEC4E antibody (10-4120 ABEO MICS). Goat anti-mouse PE conjugate was used as the secondary antibody.

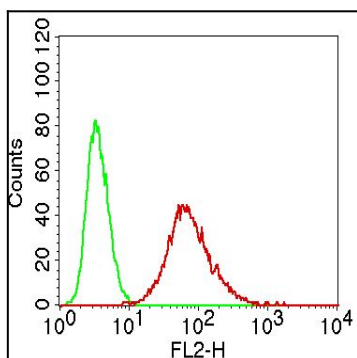


Figure-3: cell surface flowcytometric analysis of Anti-CLEC4E in HeLa cells using 0.5 µg/10<sup>6</sup> cells of Anti-CLEC4E (clone: ABM42C6) . Green represent isotype control and red represent Anti-CLEC4E antibody (10-4120 ABEO MICS). Goat anti-mouse PE conjugate was used as the secondary antibody.